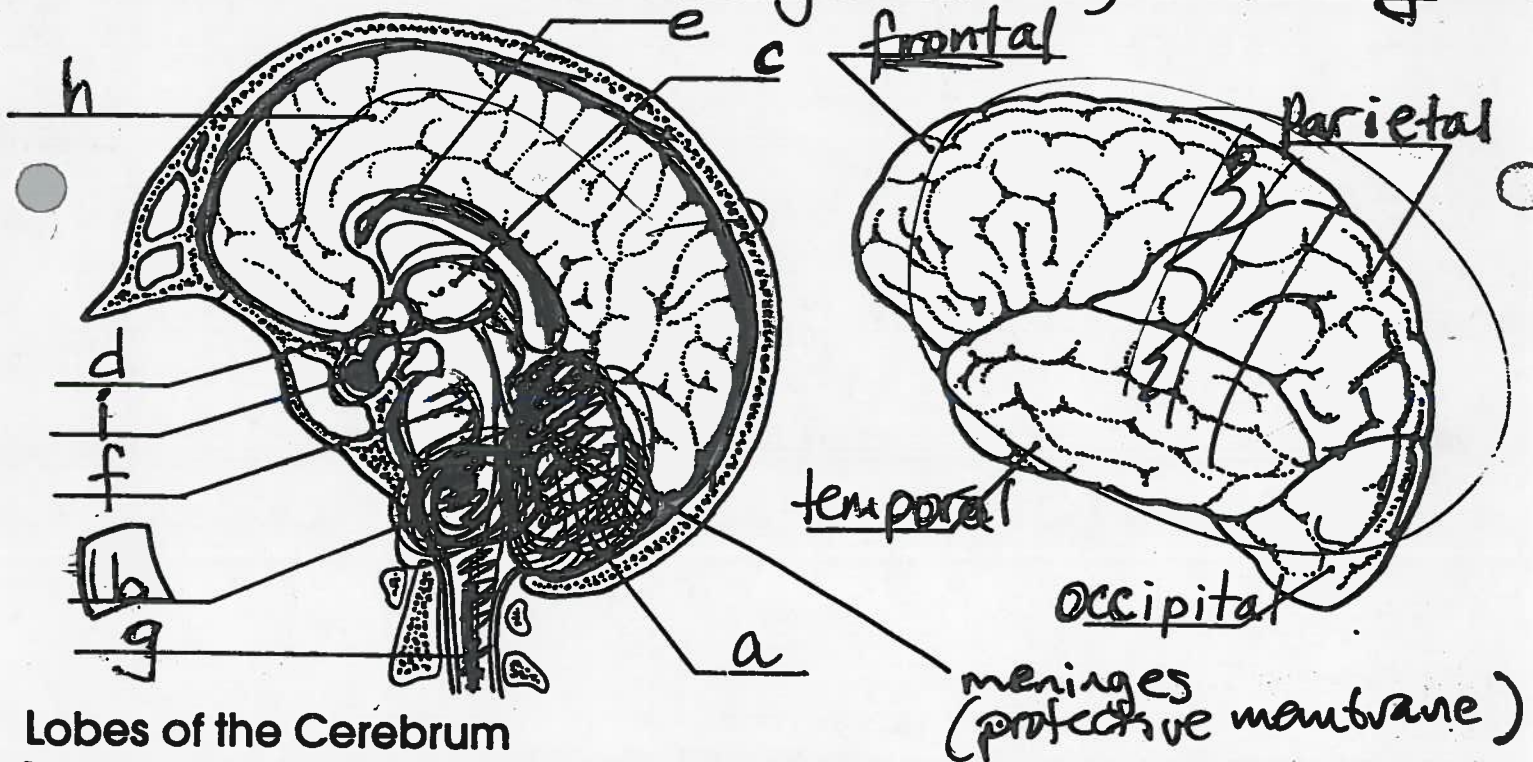


# STRUCTURE OF THE BRAIN

Name \_\_\_\_\_

Label the correct parts of the brain and spinal cord on the diagram at the left below. Give the purpose/function of each part.

- cerebellum - co-ordinates balance and action of muscles
- medulla oblongata - controls breathing, heart rate, blood pressure
- thalamus - organizes sensory input
- hypothalamus - controls secretions of the pituitary gland
- corpus callosum - thick band of fibers joining cerebral hemispheres
- pons - link between cortex and cerebellum
- spinal cord - main nerves of CNS extending down from brain
- cerebrum (cortex) - largest part of brain; voluntary activities
- pituitary gland - secretes many hormones; "master gland"



## Lobes of the Cerebrum

The diagram to the right above shows the four major lobes of each hemisphere of the cerebrum: frontal, parietal, occipital and temporal. Label each lobe. Then, fill in the blanks below with the correct answers.

The frontal lobes control some body movements, reasoning, judgment and notions. The sense of vision is located in the occipital lobe. The sense of hearing is interpreted in the temporal lobes. The parietal lobes interpret sensations such as pain, pressure, touch, hot and cold.